



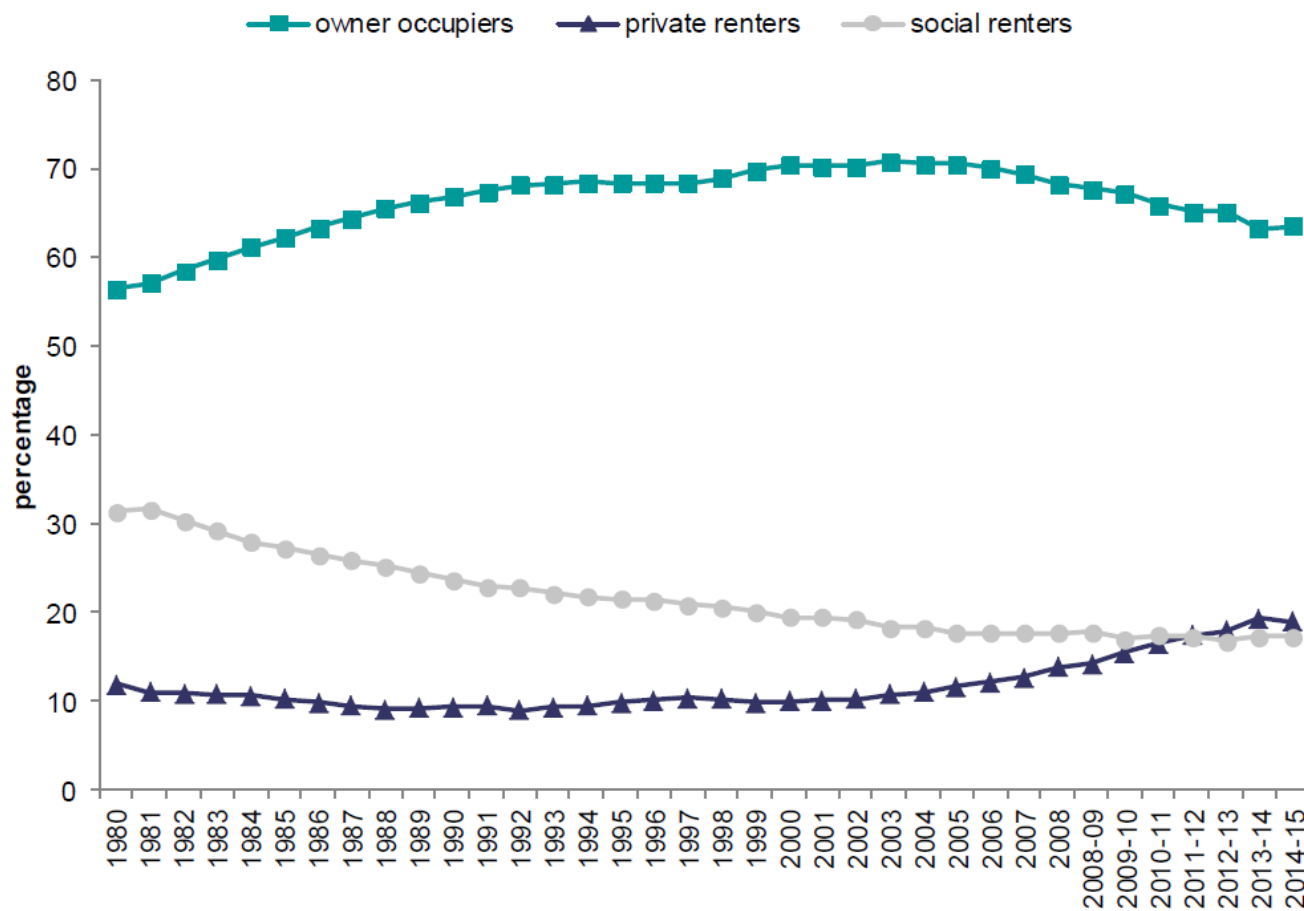
# Energy Poverty in the UK: Liverpool's experience

Neil Johnson  
ECO Framework Project Manager



# Energy Poverty in the UK:

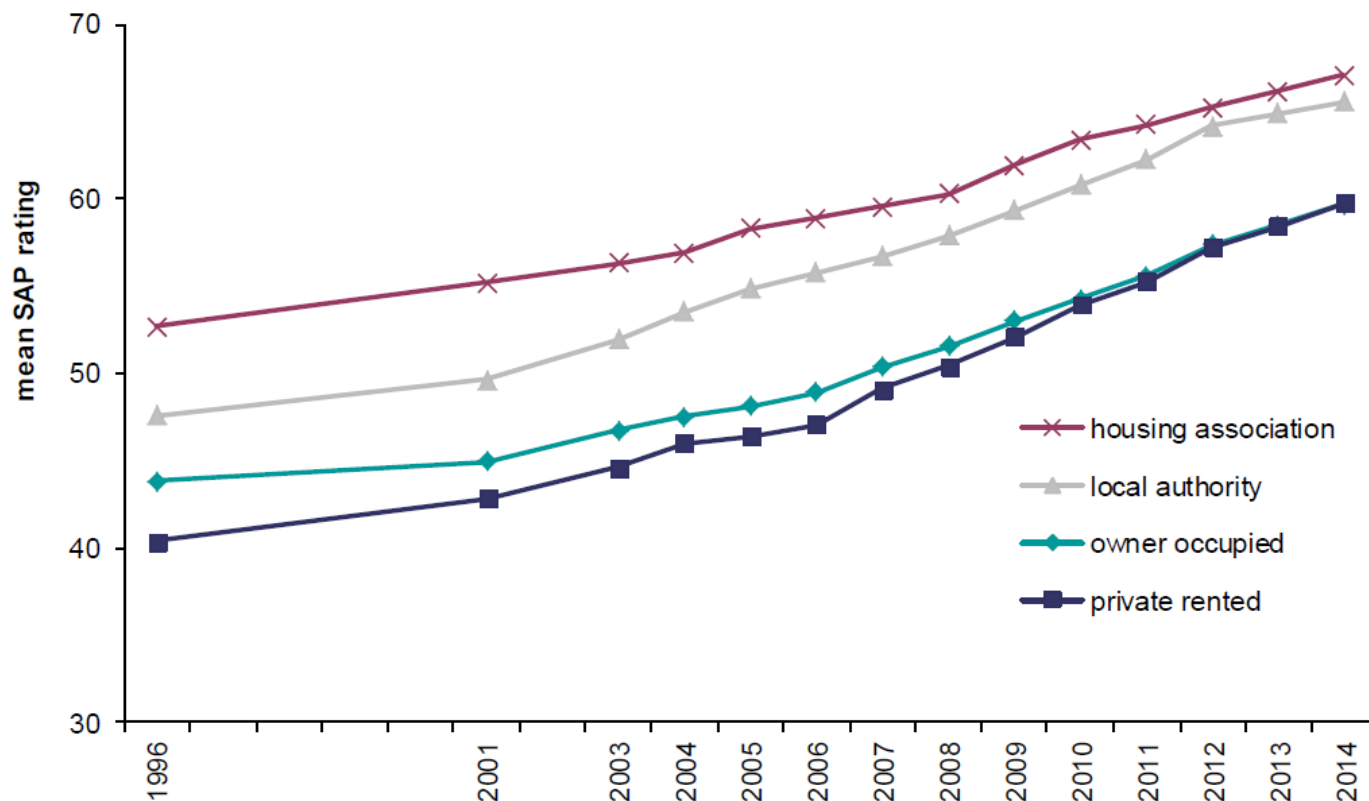
## Housing and Health: energy poverty



Data from the English Housing Survey 2015  
 Crown Copyright Her Majesty's Stationery Office (HMSO)

# Energy Poverty in the UK:

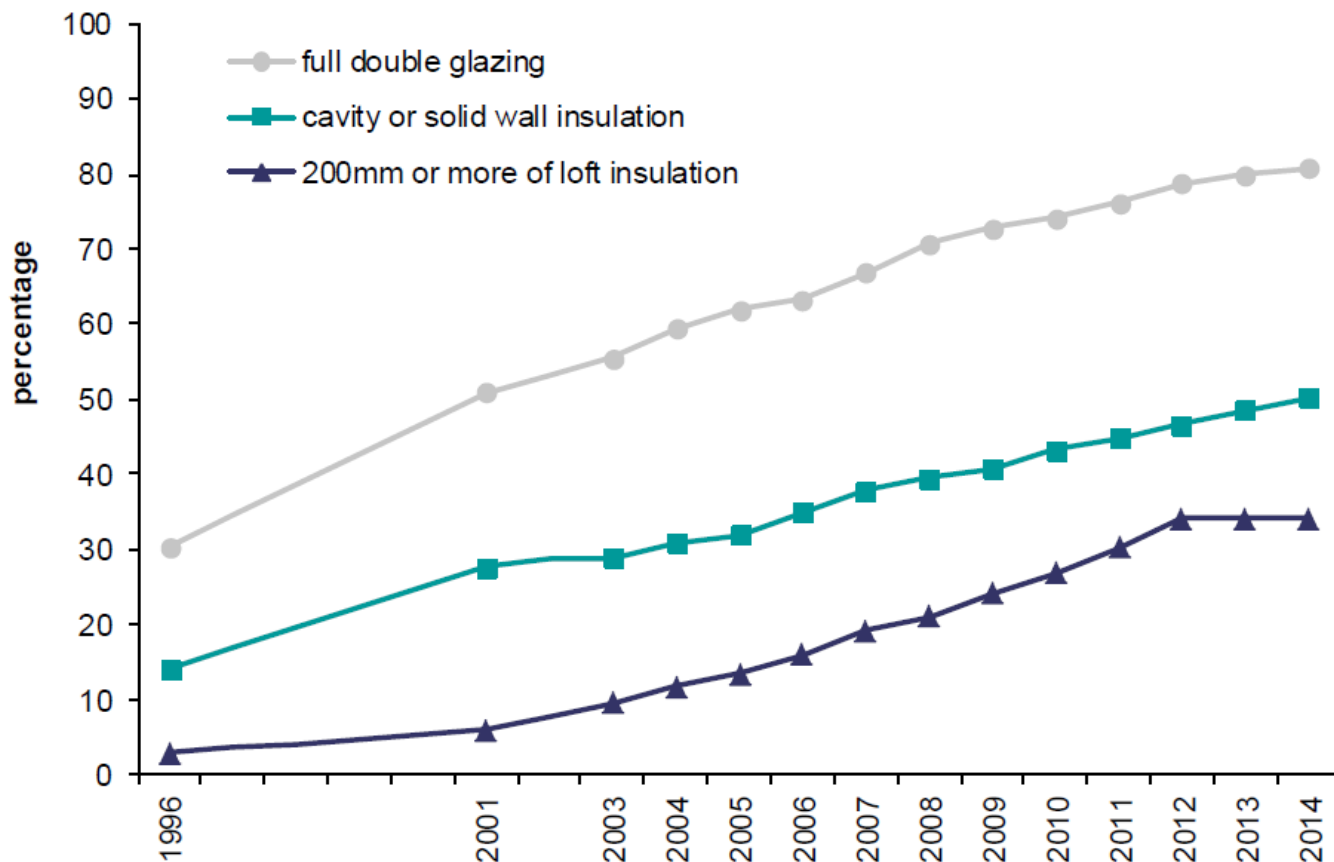
## Housing and Health: energy poverty



Data from the  
English Housing  
Survey 2015  
Crown Copyright Her  
Majesty's Stationery  
Office (HMSO)

# Energy Poverty in the UK:

## Housing and Health: energy poverty



Data from the  
English Housing  
Survey 2015  
Crown Copyright Her  
Majesty's Stationery  
Office (HMSO)

# Tackling fuel poverty: UK context

## Housing and Health: energy poverty

### What is fuel poverty?

Households in fuel poverty face both lower incomes and higher energy needs compared to typical households.



Department of Energy & Climate Change



Typical **English** household



Typical **fuel poor** household

Annual **income** after tax and housing costs



£19,707

less than half



£9,330

Annual **energy needs**



£1,242

more than 20% higher



£1,513

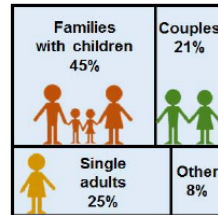
### Who are the fuel poor?

The annual fuel poverty statistics reveal a lot about the typical fuel poor household, including dwelling and economic conditions.

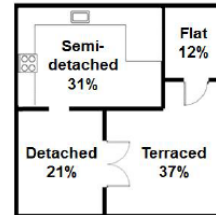


Department of Energy & Climate Change

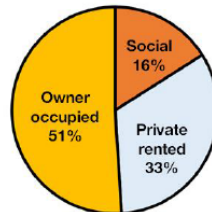
Mainly families



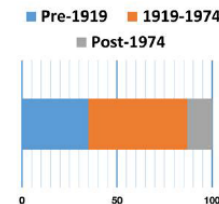
Living in larger homes



Usually private tenure



Living in old dwellings



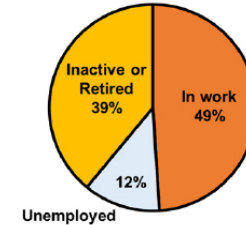
### Who are the fuel poor?

The annual fuel poverty statistics reveal a lot about the typical fuel poor household, including dwelling and economic conditions.

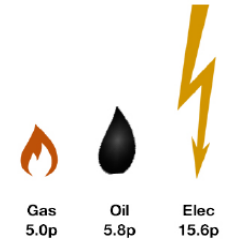


Department of Energy & Climate Change

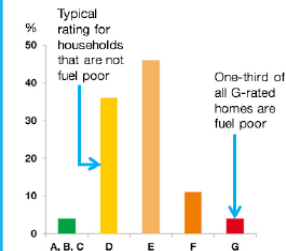
Working where possible



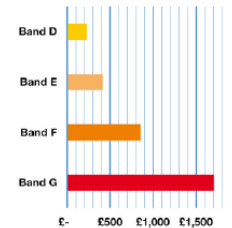
Pay high prices off-grid



Not energy efficient



Average gap per Band



“Cutting the cost of keeping warm – a fuel poverty strategy for England” 2015  
Crown Copyright Her Majesty's Stationery Office (HMSO)

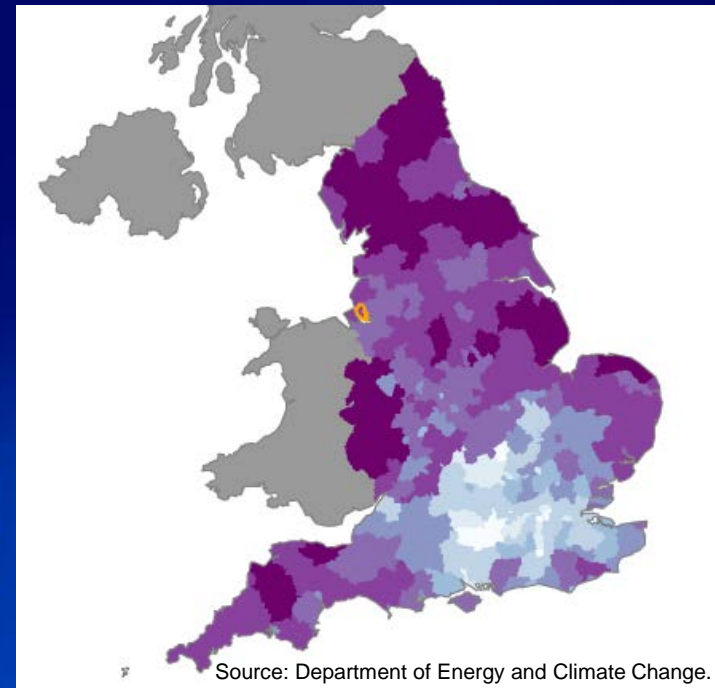
Liverpool  
**Healthy Homes**  
 Healthier homes,  
 Healthier lives



**NHS**  
 Liverpool  
 Clinical Commissioning Group

EUROPEAN AWARD WINNER  
 ELISAN UNCCAS FONDATION GDF SUEZ

ENERGY POVERTY 2011

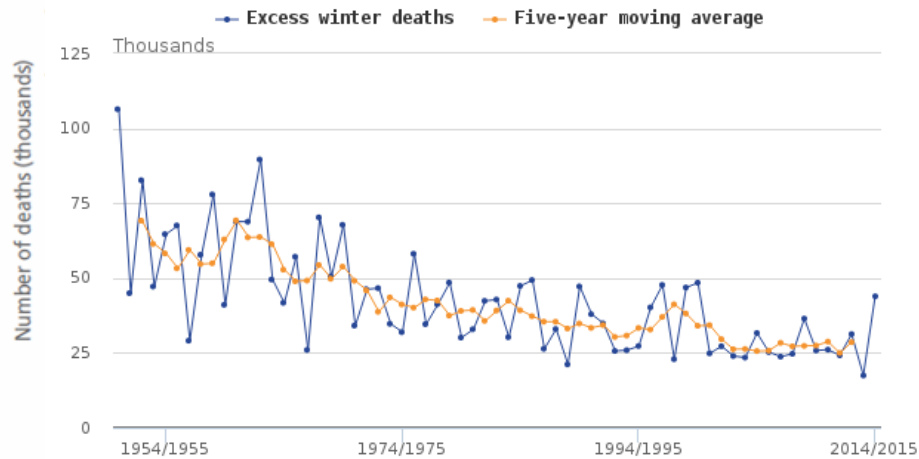
# Liverpool Healthy Homes Programme



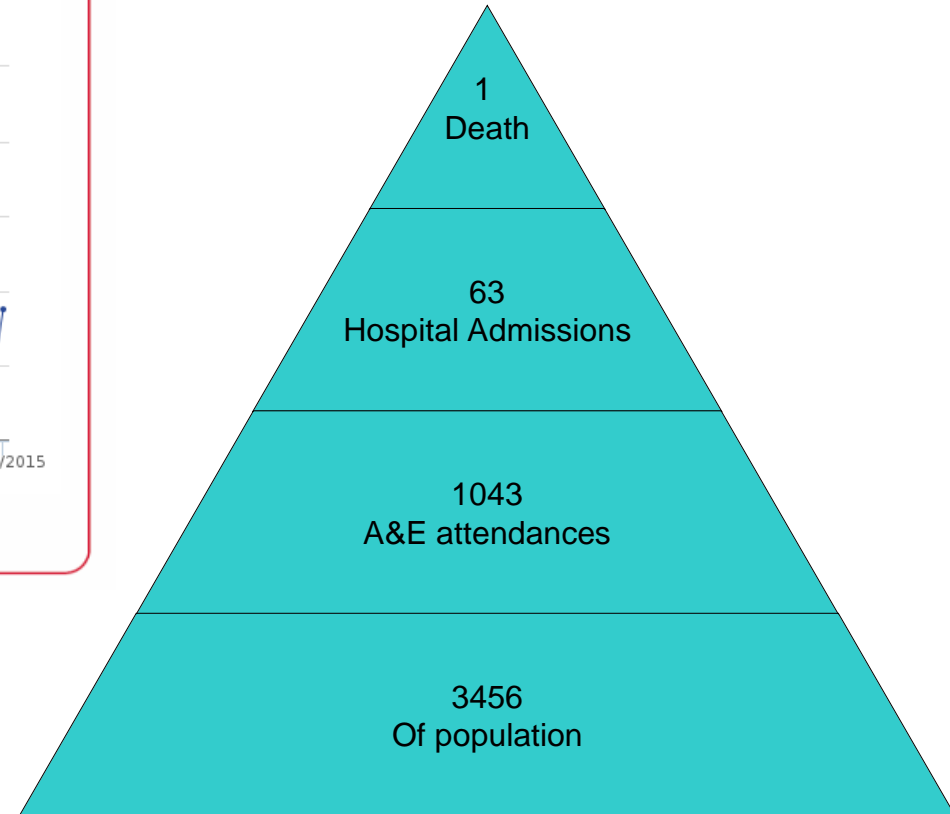
# Housing & Health



Figure 1: Excess winter mortality (EWM) by year and five-year moving average, England and Wales



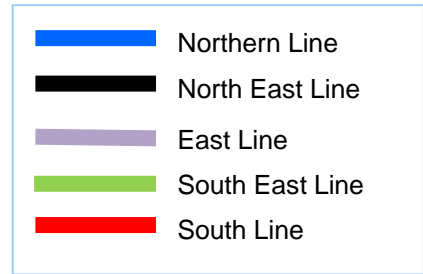
Source: Office for National Statistics



## Commissioning Drivers

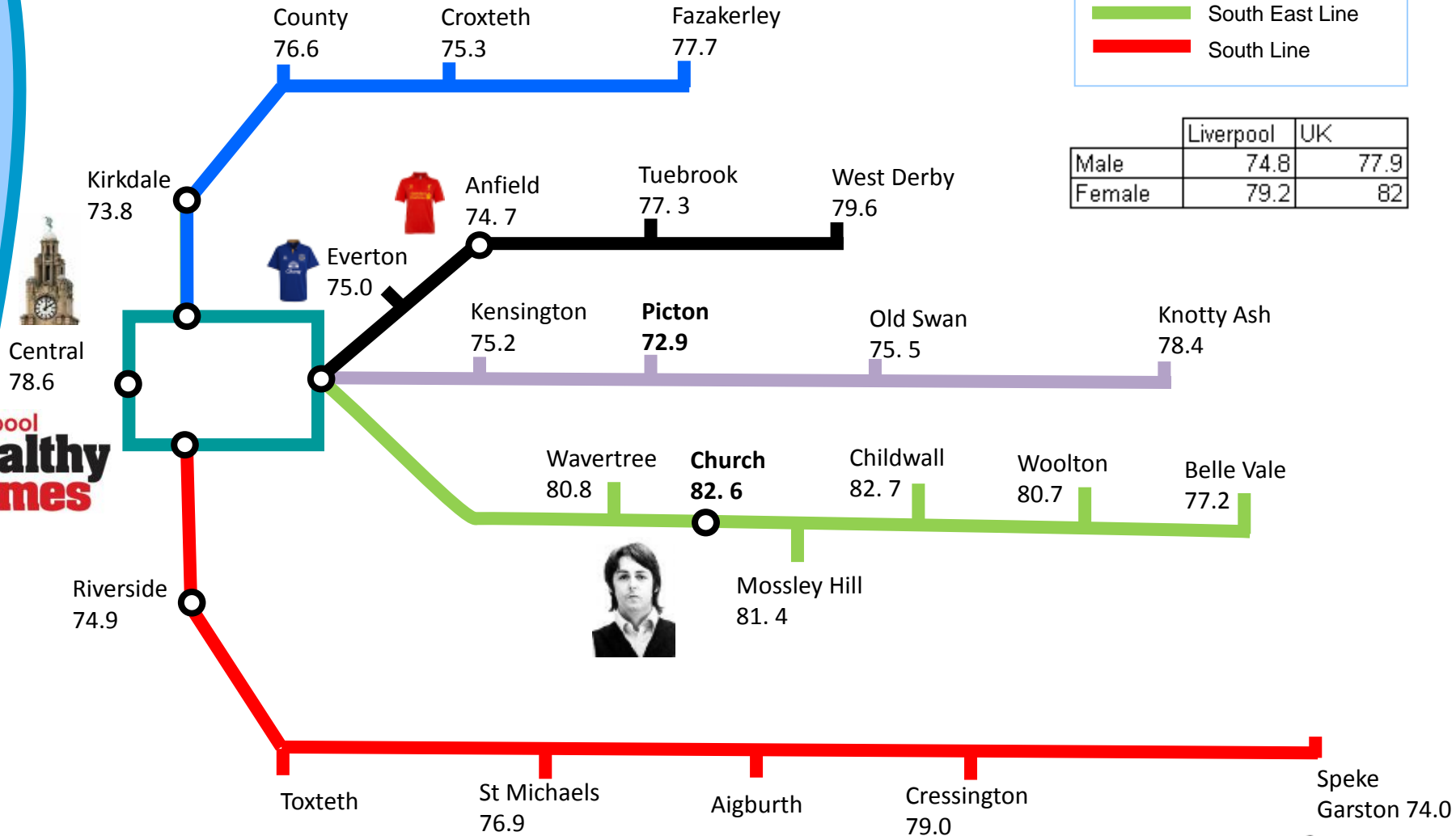
- Tackling health inequalities
- JSNA
- Housing, Health and Safety Rating System

# Liverpool Life Expectancy



	Liverpool	UK
Male	74.8	77.9
Female	79.2	82

Liverpool  
**Healthy  
Homes**





# Healthy Homes Programme -

## objectives



Through the removal of hazard exposure, the programme is designed to reduce premature deaths by up to 100 when fully implemented, and reduce GP consultations and hospital admissions by over 1000 cases

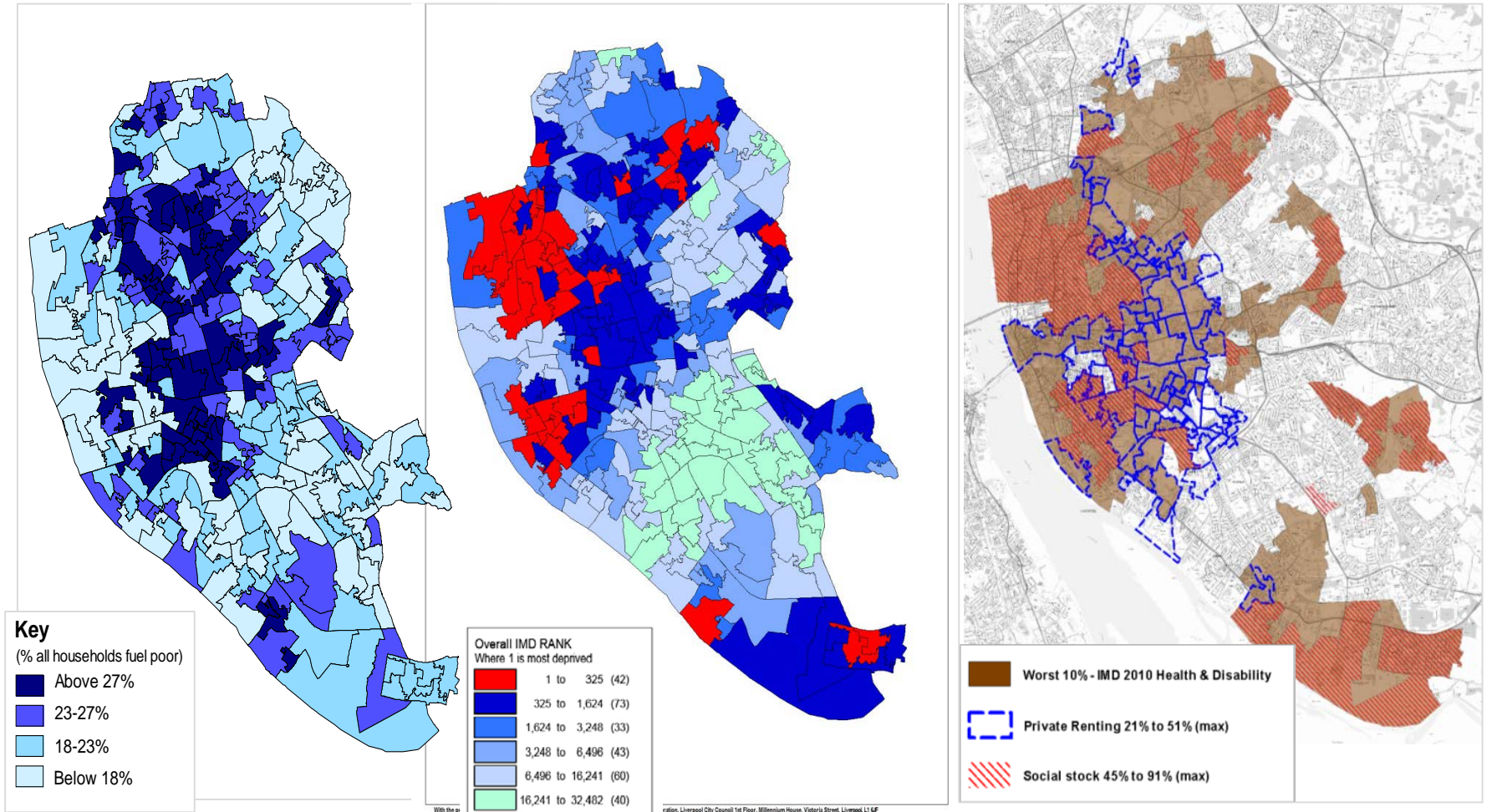
### Phase 1

- Identify 25,000 properties
- Assess the health and housing needs of each occupant
- Engage residents
- Carry out full health and safety inspection in 4,400 properties

it's liverpool



# Fuel poverty, health deprivation & distribution of rented housing

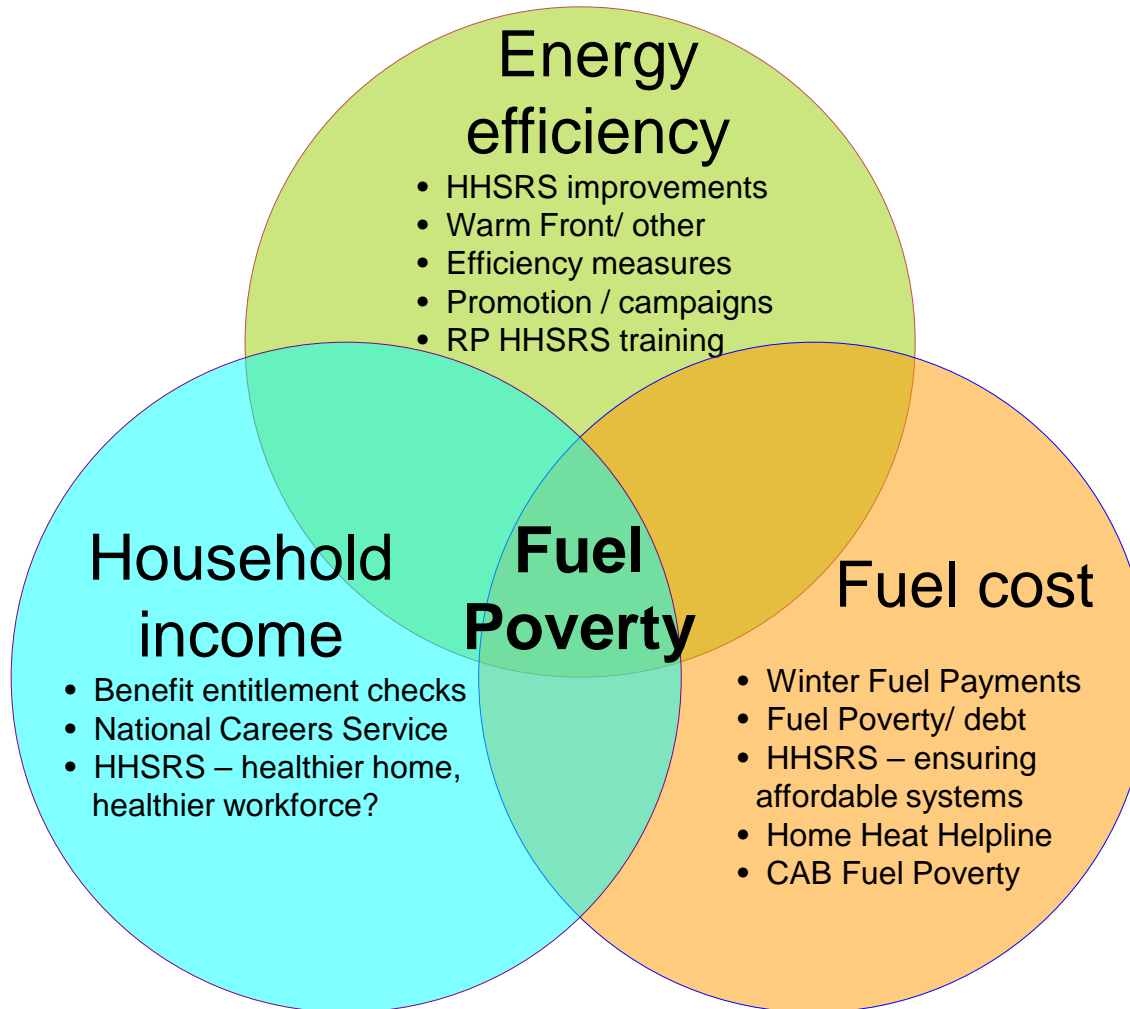


Fuel poverty rates  
across Liverpool

Indices of Multiple  
Deprivation

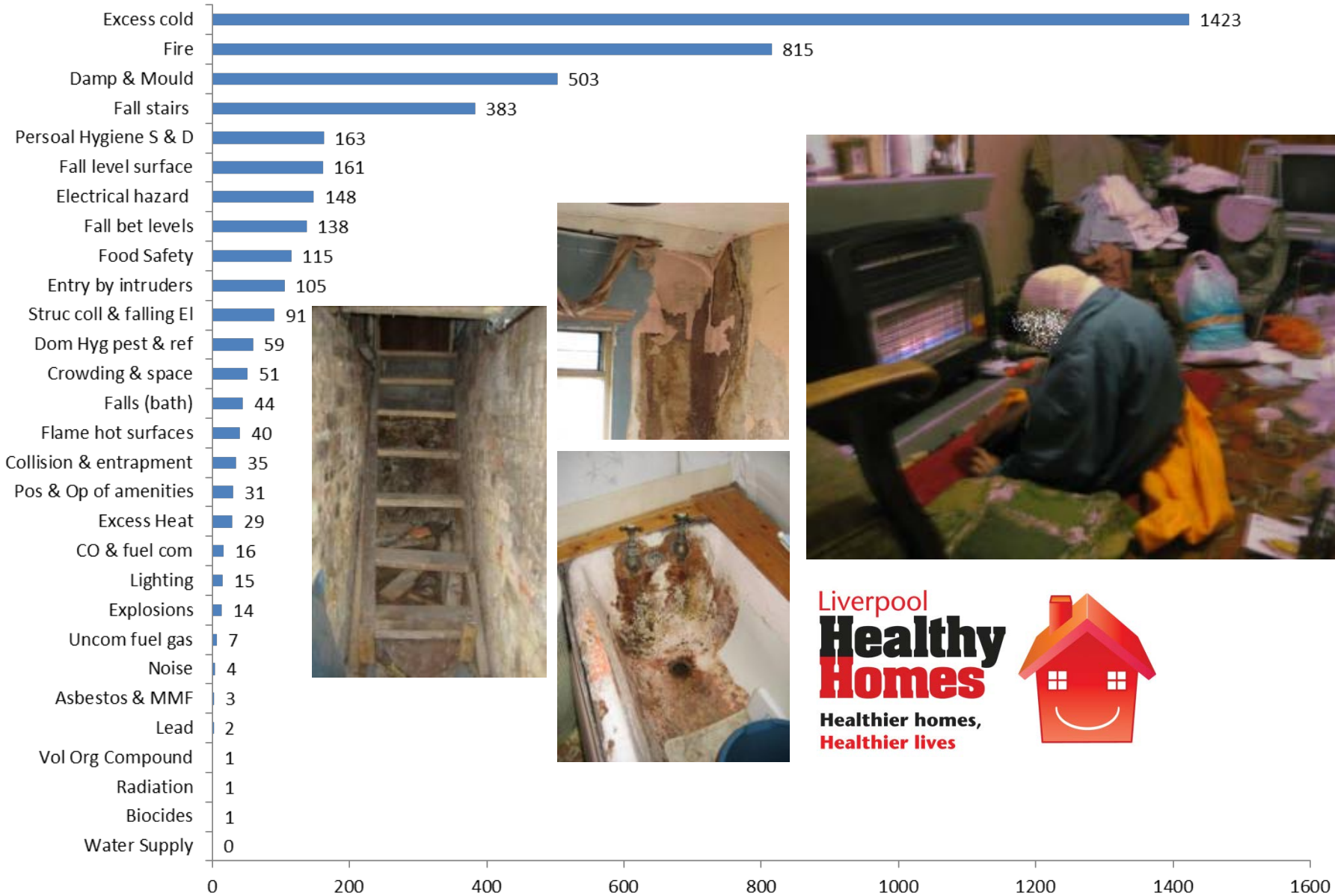
Distribution of rented housing &  
health deprivation

# Tackling Fuel Poverty: Liverpool



Targeted approach by focusing on deprived areas, and inbound referrals

# Common home hazards to March 2016



# Health Promotion

## Working with landlords

- Provide information about key contacts
- Ensure annual checks of gas appliances carried out. Assisting landlords gain access using enforcement powers
- Healthy Homes Property Standard



## Healthy Homes Programme

Need a Dentist or GP  
Register on line NOW

- Access the Internet
- Type Health Services Near You\*
- Select NHS Choices
- Select Dentist or GPs
- Type in a Post Code
- Click on the box showing "Accepting New NHS Patients" click update
- Click on Find Dentist/GP Practices



## Housing and health campaigns

- CO Awareness
- Child Accident Safety
- Falls prevention
- Winter Survival



**FREE PRIZE DRAW**  
3 x £100  
towards your gas and/or electric bill. Drawn in November, December and January.

**FREE Winter Survival Event**  
@ St Georges Hall  
12th November  
10am - 2.30pm

**FREE public winter events**  
Come and get your winter freebies!

Dovecot Library	10th October	1.30pm - 3.30pm
Brack Road Library	13th October	1pm - 3pm
Wilton Library	18th October	1pm - 4pm
Old Swan Library	21st October	1.30pm - 3.30pm
West Derby Library	5th November	11am - 1pm
Toxteth Library	10th November	10am - 1pm
Spotow Lane Library	24th November	10am - 1pm

Liverpool City Council  
NHS

# Collective buying power campaigns



## Emergency accommodation pilot

- To reduce hospital admissions and delayed discharges associated with sub standard housing

£2000 per week  
Hospital Stay

Under used by  
NHS services

£200 per week  
dedicated flat

Project revisited  
by CCG



# Out Reach Pilot



## Healthy Homes on Prescription (then)

- 55 GP practices clinical
- IT system 'alerte' during consultation
- Simple referral made from clinical system to Healthy Homes
- Healthy Homes visit and provide feedback



## Health Centres (now)

Advocates regularly visit 39 centres to provide Healthy Homes service in surgeries, providing better results.

## CAB Advice on Prescription

Greater collaboration in GP surgeries is under way between the Citizens Advice Bureau and the Healthy Homes Team

# Current Energy Partners & Projects



Department  
of Energy &  
Climate Change



LIVERPOOL CITY REGION  
COMBINED AUTHORITY



Liverpool

Clinical Commissioning Group



Action for Warm Homes



Foundations

Liverpool  
**Healthy  
Homes**  
Healthier homes,  
Healthier lives



The ScottishPower  
Energy People Trust

Supporting Communities Since 2005



SCOTTISHPOWER



Keepmoat  
PROMISE. DELIVERED.



it's liverpool



# Progress - April 2009 to March 2016

- 46,678 initial assessments
- 25,049 surveys completed
- 22,073 referrals to partners:
  - 6,050 EHO
  - 1,536 for Benefits Max
  - 1,451 for EE & Fuel Poverty
  - 1,670 for Fuel Debt



it's liverpool

# Progress – Housing conditions

- 6,050 Health & Safety inspections carried out
- 4,426 serious housing hazards identified
- £5.5M Private sector investment
- 30 construction jobs supported (estimate)
- 3059 referrals to social housing providers for repair issues

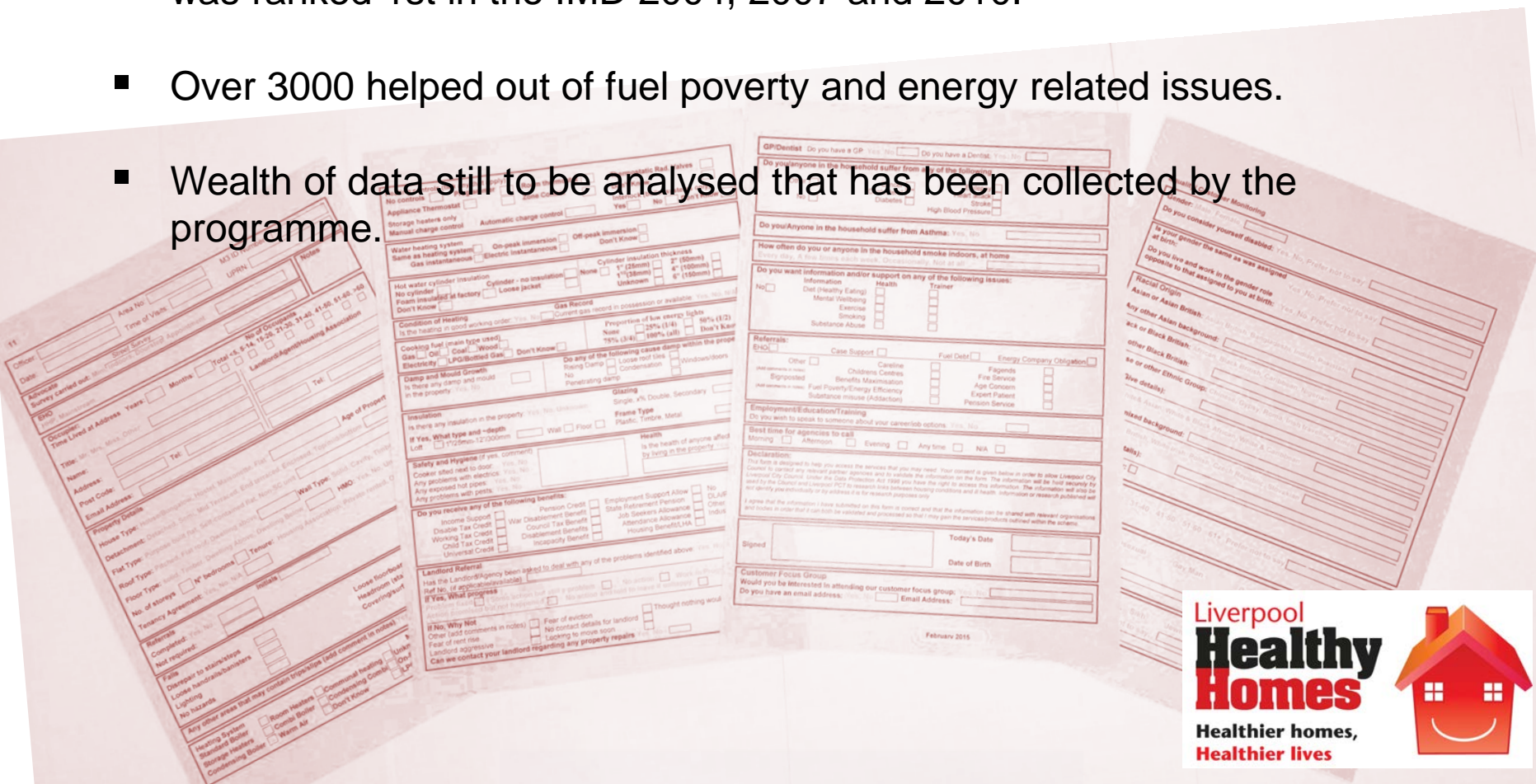


it's liverpool

# Evaluation (Ongoing, but..)

- Reduction in health deprivation since 2007 report
- Liverpool is ranked the 4th most deprived local authority area out of 328 on IMD 2015 and is no longer England's most deprived local authority. Liverpool was ranked 1st in the IMD 2004, 2007 and 2010.
- Over 3000 helped out of fuel poverty and energy related issues.

- Wealth of data still to be analysed that has been collected by the programme.



# Cold homes – changing legislation

Liverpool  
**Healthy  
Homes**  
Healthier homes,  
Healthier lives



- Liverpool took action against a landlord who had installed a heating system which was too expensive to operate, contending that it was unaffordable & unacceptable on grounds of health and safety
- Initial court ruled that affordability of system not relevant to health and safety
- This was appealed by the Council, and the matter was raised in the Houses of Parliament
- A higher court agreed that the running costs of a heating system are a relevant factor

Friday, June 15, 2012

## NEW RULES 'TO CUT' TENANTS' FUEL BILLS

by **MARC WADDINGTON**  
Political Reporter

### Landlords told to consider energy costs

PRIVATE landlords in Liverpool could be forced to install heating systems that are cheap to run for their tenants after the council won a landmark court ruling.

The decision means that environmental health officers will be able to demand that landlords must consider the fuel costs to their tenants resulting from the installation of electric heaters.

The ruling sets a national precedent that means private tenants all over the country could benefit from cheaper bills.

The case came after landlord Anwar Hal Kassim ignored the advice of council officers when he installed panel heaters on the standard electricity tariff at a pre-1920, poorly insulated house in Botanic Road.

The council argued that the cost to the tenant of heating the two bedroom house would be as much as £1,826 a year, but that other, cheaper systems were available that could slash the bills by up to a third.

Mr Kassim contested the council's instructions and took it to a residential property tribunal, which deemed that the running costs of a system should not be a concern of environmental health officers demanding properties are properly heated.

But the council appealed to the Upper Tribunal of the Lands Chamber and successfully argued that the cost of heating was a relevant factor for environmental health to consider when assessing a property's suitability under the Housing Act 2004.

Unlike the decision of the residential property tribunal, the decision of the Upper Tribunal is legally binding.

Cllr Ann O'Byrne, cabinet member for housing and community safety, said: "This is fantastic news. It is wrong for private landlords to get away with installing heating systems that are cheap for them but are exorbitant for their tenants to use and stay warm.

"Fuel poverty is a major issue here in Liverpool as well as nationally and this decision will benefit every private tenant."

**ECHO** cc.uk  
twitter  
Join us on Twitter  
@LiveEchoNews



BRE evaluation of first year's operation shows:

- **861** HHSRS inspections removing **725** Cat1 hazards
- Total project cost **£1.07M** (Inspection cost £300K)
- On-going annual NHS savings **£440K** (£4.4M over 10 years)
  - Excess cold hazard alone £341,000 (£3.41M over 10 years)
- Wider Society annual savings **£1.1M** (£11M over 10 years)
  - Excess cold hazard alone £852,000 (£8.52M over 10 years)

## Total anticipated savings by HHP:

(based on full data set; above figures were produced on 1/5 of the data)

**£55 Million**

(£42M from excess cold)

(Building Research Establishment Jan 2011)





Shortlisted for the National Institute of Health and Care Excellence (NICE):  
Shared Learning Awards 2016 (July)

<https://www.nice.org.uk/sharedlearning/liverpool-healthy-homes-programme-7-years-of-pre-empting-nice-guideline-ng6-excess-winter-deaths-and-morbidity-and-the-health-risks-associated-with-cold-homes>

# Remember it costs to do nothing!

Thank you for listening

[Neil.Johnson@Liverpool.gov.uk](mailto:Neil.Johnson@Liverpool.gov.uk)

&

[Ian.Watson@bre.co.uk](mailto:Ian.Watson@bre.co.uk)

it's liverpool

